



Ambientec

Thank you for purchasing Ambientec Xtal.
Please read these instructions thoroughly before using the product.

Contents

- 1 Safety Precautions
- 2 Package Contents
- 3 Product Specifications
- 4 Nomenclature
- 5 Waterproofing Specifications
- 6 Operation
- 7 Care and Maintenance

1 Safety Precautions

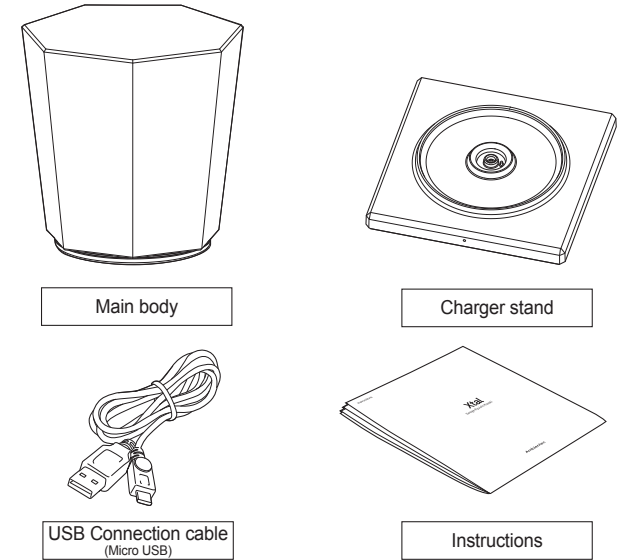
- The Safety Precautions include critical information for safety. Be sure to heed them.
- The following symbols mean the degree of the risk or damage that may be incurred if the product is used erroneously without heeding the information given after each symbol.

	DANGER	Indicates an imminently hazardous situation which, if not avoided, will result in death or serious injury
	WARNING	Indicates a potentially hazardous situation which, if not avoided, could result in death or serious injury.
	CAUTION	Indicates a potentially hazardous situation which, if not avoided, may result in minor/moderate injury or equipment damage.

If the product is used erroneously without heeding the following danger, warning and caution, a fire, heat generation, damage or liquid leak may cause burns, an injury or loss of sight.

	DANGER	<ul style="list-style-type: none"> •Do not open or modify the product. •Do not throw the product in fire or heat it in an oven. •Do not use or leave the product under a high temperature and humid conditions. •Do not apply an impact to the product by dropping it, etc. Otherwise, damage to the glass shade or a part may cause an injury. •Do not place the product in the reach of infants.
	WARNING	<ul style="list-style-type: none"> •Do not short-circuit the charge terminal of the main body or charger stand with a metallic pin, etc. •When using the optional AMB-AC02 USB AC adapter, use it at the rated voltage (AC100–240V). •Do not moisten the AC adapter and charger stand or use them while they are wet. •Inspect periodically that the AC adapter, household power outlet and the charge terminal are free of accumulated dust. •Stop using the USB cable if its cord is damaged. •Insert the plugs of the household power outlet and AC adapter all the way. •Do not swing or throw the main body. •To prevent injury, do not use the product if the glass shade is cracked.
	CAUTION	<ul style="list-style-type: none"> •Do not place the product on an unstable or tilted surface. Otherwise, the main body fall and cause damage or injury. •When the product is not to be used for a long period, unplug the AC adapter from the household power outlet. •Use the product under an ambient temperature between 0°C and 40°C. •Do not charge the Xtal outdoors or any place subject to direct sunlight where high temperatures are a possibility.

2 Package Contents



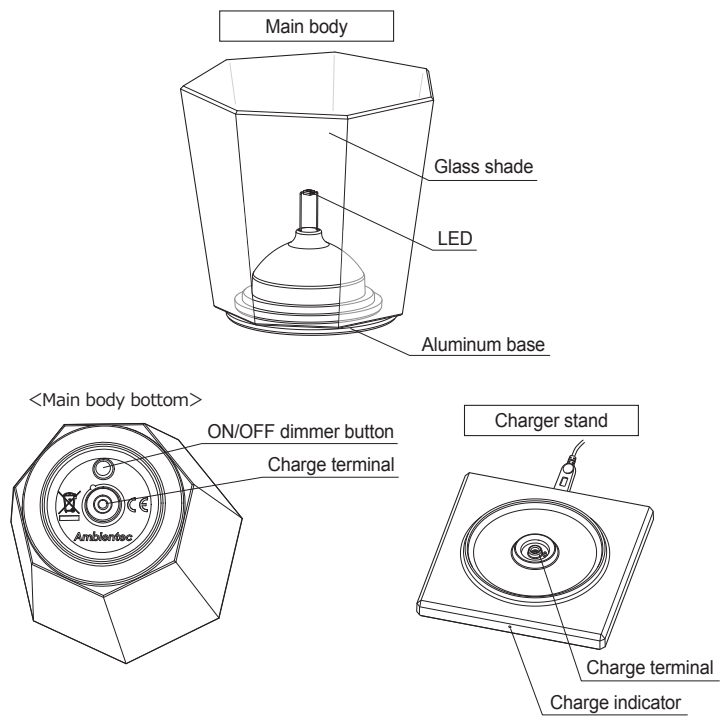
- * Thanks to widespread use of computers and mobile phones, most people today already possess a USB-compatible AC adapter. To minimize waste, AC adapter is not provided with this product.
- * In addition to Ambientec's optional AC adapter (AMB-AC02), you can also use a USB AC adapter compatible with DC 5V/≥1A output.

3 Product Specifications

Product name	Xtal		
Product code	XTL-01SLV		
Main body			
Light source	LED		
Dimmer level (3 steps)	LOW	MID	HIGH
Color temperature	2000K		
Battery run time	24 Hours	12 Hours	6 Hours
Automatic on / off function	LED is automatically turns off when the main body is placed on the charger stand and turns on when it is removed.		
Charge method / Period	USB Charge / Approx. 3 Hours		
Power supply	Rechargeable lithium-ion battery, 3.7V / 190mAh		
Recharging life	Approx. 500 cycles		
	* The recharging life refers to the standard number of times the battery can be recharged before battery performance drops below 50% when fully charged.		
Waterproofing	IPX6 equivalent		
	* IPX6 means the degree of liquid ingress protection at which "water projected in powerful jets against the enclosure from any direction shall have no harmful effects".		
Dimensions	Φ80mm × 82mmH (Approx.)		
Weight	620g		
Main materials	Glass shade : Crystal glass Aluminum base : Aluminum alloy, Silicon rubber, ABS, etc.		
Operating temperatures	0°C to 40°C		
Charger stand			
Dimensions	85mmW × 85mmD × 8.5mmH		
Weight	54g		
Main materials	Polycarbonate, Aluminum alloy, Non-migrating rubber, etc.		

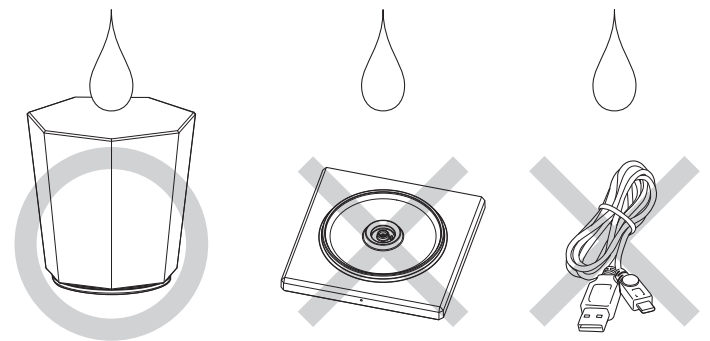
Design and specifications are subject to change without notice.

4 Nomenclature



5 Waterproofing Specifications

The main body of this product is designed waterproof (IPX6* equivalent) but it cannot be used underwater, for example in a bathtub. The charger stand, AC adapter and USB Connection cable are not waterproof so care is required not to moisten them. If the main body of the lamp gets wet, wipe off any moisture and dry it completely before recharging it.
 * IPX6 means the degree of liquid ingress protection at which "water projected in powerful jets against the enclosure from any direction shall have no harmful effects".



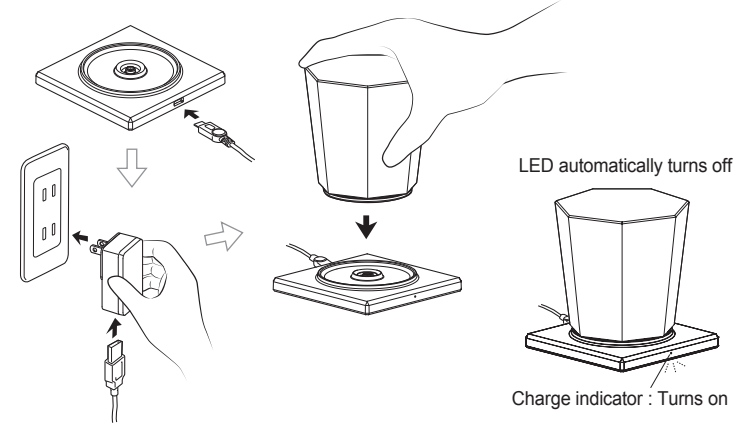
Notes When Using the Xtal in the Bathroom

CAUTION

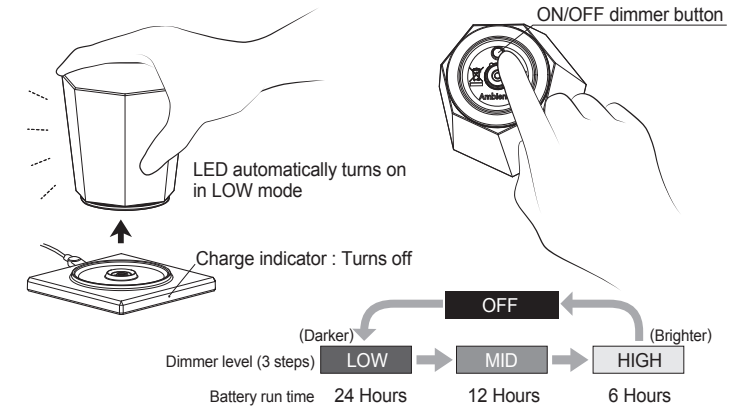
- Do not leave the Xtal where it can be exposed to high temperatures or humidity, such as a bathroom or sauna.
- Do not place the Xtal on a bathroom floor or any surface with poor drainage.
- Do not place it in water.

6 Operation

- 1 Recharging the main body**
- Connect the smaller connector (micro-USB) of the USB Connection cable to the charger stand.
 - Connect the larger connector (USB) of the USB Connection cable to a USB power supply (optional AC adapter, etc.).
 - If a power adapter other than the optional genuine AC adapter is used, the charging time may be extended or charging may become impossible. It is recommended to use AC Adapter with O/P DC 5V, 1A.
 - Install the main body on the charger stand. The charge indicator lights to indicate the start of recharging.
 - When the main body is placed on the charger stand, the LED on the main body is extinguished automatically. If the main body is removed from the charger stand before recharging is complete, the LED restarts to light automatically in the LOW mode.
 - Do not charge the Xtal outdoors or any place subject to direct sunlight where high temperatures are a possibility.



- The charge indicator turns off when recharging is complete. It takes about 3 hours before the fully charged condition.
 - The charging time may sometimes be slightly variable depending on the USB power supply in use. The reference charging time is the period when the optional genuine AC adapter is used.
- 2 Operation of the main body**
- Each press of the ON/OFF/dimmer button (on the main body bottom) repeats the cycle of: LOW → MID → HIGH → OFF.
 - LOW (24 Hours) → MID (12 Hours) → HIGH (6 Hours).
 - These are the reference battery run time from the fully charged condition of a brand-new product. The battery run time decreases as the product continues to be used. For the replacement of the built-in battery, please contact your dealer or nearest Ambientec distributor. It can be replaced for a price.
 - The LED on the main body may blink when the remaining battery power is low. But this is not a malfunction.



7 Care and Maintenance

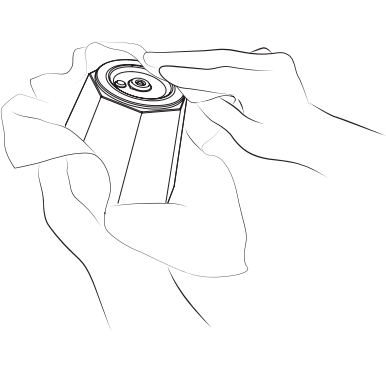
To use this product in the best condition, please maintain it according to the following guidelines.

<Cleaning>

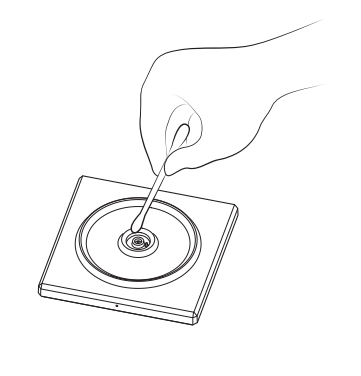
Glass shade
Wipe the glass surface with a soft cloth. If it is hard to remove the greasy component, moisten the cloth with diluted alcohol for easy cleaning.



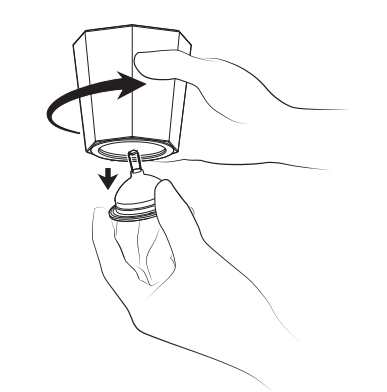
Aluminum base
If the charge terminal on the bottom or the silicon sheet (black sheet around the terminal) gets dirty, wipe with a soft, lint-free cloth moistened slightly with water.



Charger stand
If dirt or dust is attached to the charge terminal, remove it with a cotton swab, etc. Do not use a metallic object such as tweezers for removal.



Inner sides of glass shade and aluminum base
When the inner surface of the glass shade or aluminum base gets dirty, the shade can be removed by turning it counterclockwise.



- The crystal glass breaks very easily. Handle the product carefully so as not to break the glass by toppling or colliding with an object.
- Do not use a liquid cleaner spray, a solvent such as benzine or lacquer thinner, or a polishing agent. Otherwise, the product surface may be damaged and lose the transparent and glossy look.
- Never touch the LED which is an easily damaged precision component.

<Repair>

Do not attempt to open, repair or modify the product by yourself. If servicing is required, contact your dealer or nearest Ambientec distributor.